

**Pruett/Pruitt/Prewitt** is a public family group on [myfamily.com](#). To add content or comment you must be a member.

[Request to join this group](#)



## Pruett/Pruitt/Prewitt

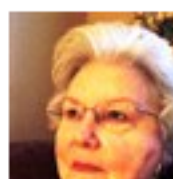
Search tags in this group

[Home](#) [DNA Console](#) [Compare DNA](#) **[Discussions](#)** [Photos & videos](#) [Calendar](#) [Files](#) [Shop](#) [Members](#)

### WB Pruitt has joined our group.

WB Pruitt, who is a cousin of Max Bradley, has joined our project. WB's DNA places him and his many cousins in our Family Group B. I hope WB's family research will help this group find their most distant Pruett/Pruitt ancestor.

#### Comments



**Elaine Pruett(Ron)DF 13** Oct 11, 13

WB, glad to have you in the group, and to be able to see the 46 marker comparison here. Out of the 111 marker test you did on FT, 46 markers are the same as those used here by Ancestry. You will note there is a difference between Ancestry and FT in the projection of the MRCA, but this is because of the different number of markers used.

Since your family tree is the same as Max's, we know your ancestors go back to Rev. war Joshua out of Anderson, SC. Group B also includes Rev. war Solomon out of KY. Your match to group B seems to lend more support to the belief that Rev. soldiers Solomon, and Joshua are probably brothers, along with Samuel and Ransom; all possibly the sons of Judith Dudley and William Pruitt. See the discussion posted in Nov. 2010 on this site in which Marcia McClure has shared some of her research on this line.

You now have a lot more cousins than you knew about! Isn't genealogy great?



**mary and Herbert Max Bradley (PRUITT) edens** Oct 11, 13

Thank you Elaine, John Pruett, and WB Pruitt for all of your cooperation which has led us to the culmination of several years effort to get WB tested and added to this group. WB is FTDNA test 256386 and is also posted on the Pratt project in order to let everyone see all 111 markers. His most interesting rare marker is DYS 552=23. The normal seen result on this one is 24 and the most common seen mutation is 25 which Ronald Pruitt has and 17 % of folks in R1B haplogroup have that mutation. We have order SNP L21 for WB and await to confirm that he matches the L21 of Ronald Pruitt. It would be interesting to know how many others with DYS 447=27 are also L21? It would be interesting to know if we have any other folks with the rare mutation of DYS 552=23? This is NOT a marker being currently studied by this group I believe. Is that correct? We have also heard from another match to WB Pruitt, Michael, who is also planning to order L21 and upgrade to 111 markers. SO WE FINALLY ARE MAKING PROGRESS AND GETTING SOME ANSWERS.



**John W. Pruett-VA DF 13**

Wrote this on Oct 10, 13

5 views • 2 comments

[← Newer](#) [Older →](#)

#### Tags

[FamilyGroupB](#)

#### Most recent discussions by John W. Pruett-VA DF 13

[Well its official, Ancestry is shutting down our Pruett/Pruitt/Prewitt Project on September 5th](#)

[The PREMTT - PRUITT RECORDS of VIRGINIA by Richard A. Prewitt has been uploaded to the file section.](#)

[A DNA Comparison file of our Family Groups has been uploaded to the file section](#)

[Welcome Charlie Preuitt!](#)

[Welcome Justin Preuitt](#)

#### Most recent discussions

[Well its official, Ancestry is shutting down our Pruett/Pruitt/Prewitt Project on September 5th](#)

[What happens to this information](#)

[The PREMTT - PRUITT RECORDS of VIRGINIA by Richard A. Prewitt has been uploaded to the file section.](#)

[Seeking a Y-DNA Tested Direct Male Descendant of James Burriss Pruitt \(1832-1914\) of Anderson, SC](#)

[New Member with Anderson County, South Carolina Pruitt Lineage](#)