

Pruett/Pruitt/Prewitt is a public family group on [myfamily.com](#). To add content or comment you must be a member.

[Request to join this group](#)



Pruett/Pruitt/Prewitt

Search tags in this group

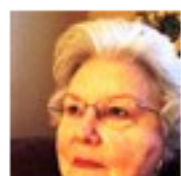
[Home](#) [DNA Console](#) [Compare DNA](#) [Discussions](#) [Photos & videos](#) [Calendar](#) [Files](#) [Shop](#) [Members](#)

FRANCIS MARION PREWETTE FOUND AT LAST!!!!

One of my passions is the graveyard shift as I call it. Looking for Pruitt graves and this area where I was born in the Dark Corner section of upstate S. C. is a ripe area for interesting finds. So here it is! A RECONSTRUCTED grave with a fresh marker in the Gowensville First Baptist Church cemetery in the old part located at junction of Highway 11 and Highway 14 in Greenville county, S. C. in the upstate on the edge of Dark corner section of upstate at one of the oldest churches in the area is the marker for "Frances Marium Prewette" B-Jan. 4, 1864-D-Jan. 24, 1918.

This has been redone from an old unreadable marker which was deciphered and replaced with a new marker. It is a family plot and the rest of information available of the others if anyone is interested. I really think we have found the elusive Francis Marion Pruitt (as a Prewette and the Marium is just a transcription error. Any comments?

Comments



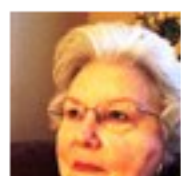
Elaine Pruett(Ron)DF13 May 27, 12

Hi, Max,
Which Francis Marion Pruett are you referring to? I ask because the Francis Marion Pruett, 1832-1814, gggr of Ron Pruett whose DNA is posted in group B is buried in Bethel Cemetery, Clay Co. AL near some of his children. A photo of his tombstone, marked "Marion Pruett, father of J F Pruett." is posted on this site as well as on Find a Grave.



mary and Herbert Max Bradey (PRUITT) edens May 27, 12

Guess I goofed Elaine!



Elaine Pruett(Ron)DF13 May 27, 12

Hey, glad you are searching. Notice I goofed also in the above email. The date should have read 1832-1914. Good luck.



mary and Herbert Max Bradey (PRUITT) edens May 28, 12

ELAINE AT LEAST I FOUND A LONG LOST FRANCES MARION PREWETT AS THIS GRAVE WAS ONLY VERY RECENTLY REFURBISHED AND HAD BEEN UNREADABLE FOR ABOUT 40 OR 50 YEARS THEY SAY..... AND I DID FIND ONE EXACTLY WHO IS A PEER OF THE CORRECT ONE WHO LIVED AT THE SAME TIME. IT IS INTERESTING MATTER EVEN IF I GOOFED!



mary and Herbert Max Bradey (PRUITT) edens

Wrote this on May 27, 12

9 views • 4 comments

[Newer](#) [Older](#)

Tags

[FamilyGroupB](#)

Most recent discussions by mary and Herbert Max

[FRANCIS MARION PREWETTE FOUND AT LAST!!!! message to South Carolina Pruitts!](#)

Most recent discussions

[Well its official, Ancestry is shutting down our Pruett/Pruitt/Prewitt Project on September 5th](#)

[What happens to this information](#)

[The PREWTT - PRUITT RECORDS of VIRGINIA by Richard A. Prewitt has been uploaded to the file section.](#)

[Seeking a Y-DNA Tested Direct Male Descendant of James Burriss Pruitt \(1832-1914\) of Anderson, SC](#)

[New Member with Anderson County, South Carolina Pruitt Lineage](#)