

Pruett/Pruitt/Prewitt is a public family group on [myfamily.com](#). To add content or comment you must be a member.

[Request to join this group](#)



Pruett/Pruitt/Prewitt

Search tags in this group

[Home](#) [DNA Console](#) [Compare DNA](#) **[Discussions](#)** [Photos & videos](#) [Calendar](#) [Files](#) [Shop](#) [Members](#)

Jesse Carter Farrar Pruitt

A member of the Pruitt/Pruett/Pruitt/Prewitt Facebook group has Jesse Carter Farrar Pruitt (1843-1920) in her male Pruett line and we want to figure out what DNA group her Pruett's more than likely fall into.

I did some research. I saw Tillman Dixon Pruett/Joseph (Jaspeth) Pruett were ancestors of Jesse and that Samuel/Samuel (MD) might be the beginning of the line but not for certain.

Does anyone have anything more concrete than what I found on my rudimentary search into Jesse Carter Farrar Pruitt's line?

Comments



Bill Pruiett Mar 13, 11

If, as Lynn Mayes indicates, the line goes back as follows: Jesse Carter Farrar Pruitt, Tillman Dixon Pruitt, Joseph/Japheth Pruitt, then Jesse is descended from Samuel Pruitt I through his son, Samuel Pruitt II, since Joseph/Japheth was Samuel I's son. I am descended from Samuel Pruitt I through his son John Pruitt [Sr.] and have not done much research on the children of Samuel Pruitt II. I would love to see someone in Samuel Pruitt II's line get tested to confirm they are related to me. We are fairly sure that Samuel Pruitt II and John Pruitt [Sr.] both living near each other in Pittsylvania Co., Va. in the late 1700s, were brothers, but the documentation for John Pruitt [Sr.] is limited since he wasn't mentioned in Samuel Pruitt I's will. By the way, Japheth was mentioned in Samuel II's will and Samuel II was mentioned in Samuel I's will. There's a nice trail with that part of the family, not so much with mine.



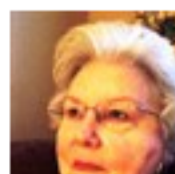
Ritchie Pruitt Mar 14, 11

Unfortunately, she does not have access to any male Pruett's from her family to do the yDNA test. I think it is her grandmother was a Pruett.



Thomas W. Pruett Mar 14, 11

I descend from the same line beginning with Samuel I then Samuel II, then Phillip the brother of Joseph/Japeth. I guess I should get my DNA tested



Elaine Pruett(Ron)DF13 Mar 15, 11

Tommy, it would be great if you do test. Never know who, among all these nice people, you will be connected with.



Tommy Pruett Mar 19, 11

My DNA is R1b, group C Heny line. Looking for father of William Alfred Pruett b 1797 NC d after 1870 Newton Co. Ark. Thanks Tommy



Ritchie Pruitt

Wrote this on Mar 13, 11

6 views • 5 comments

[Newer](#) [Older](#)

Tags

[FamilyGroupF](#)

Most recent discussions by Ritchie Pruitt

[Tangier, Virginia](#)

[Welcome Karen](#)

[Jesse Carter Farrar Pruitt](#)

[Solomon Pruitt/Prewett/Preutt \(Cumberland Co., Kentucky\)](#)

[Welcome Alan Pruitt](#)

Most recent discussions

[Well its official, Ancestry is shutting down our Pruett/Pruitt/Prewitt Project on September 5th](#)

[What happens to this information](#)

[The PREWTT - PRUITT RECORDS of VIRGINIA by Richard A. Prewitt has been uploaded to the file section.](#)

[Seeking a Y-DNA Tested Direct Male Descendant of James Burriss Pruitt \(1832-1914\) of Anderson, SC](#)

[New Member with Anderson County, South Carolina Pruitt Lineage](#)